



EKCC-12



EKCC-20

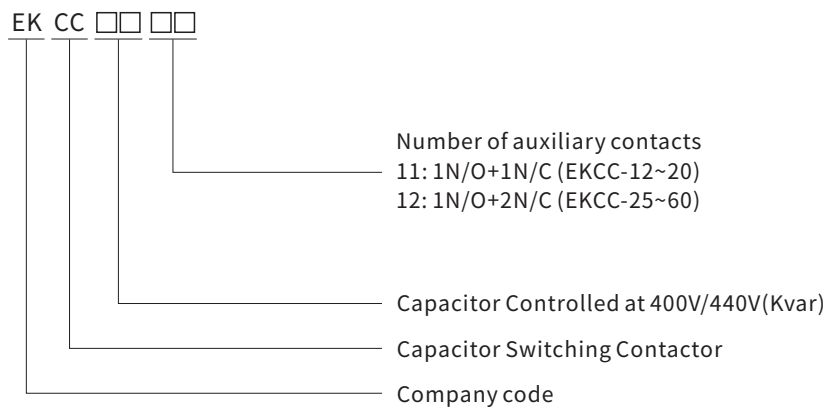


EKCC-60

Technical Data

Description	Electric value	AC50/60Hz, up to 690V;
	Ambient temperature	-5°C~+40°C; the average during 24 hours should not exceed +35°C
	Altitude	≤2000m;
	Atmosphere conditions	At mounting site,relative humidity not exceed 50% at the max temperature of +40°C, higher relative humidity is allowable under lower temperature. For example,RH could be 90% at +20°C,special measures should be taken to occurrence of dews;
	Pollution degree	3
	Installation category	III
	Installation conditions	The inclination between installation plane and vertical plane is within ±5°
	Impact and shake	The products should locate in the places where there are no obvious impact and shake

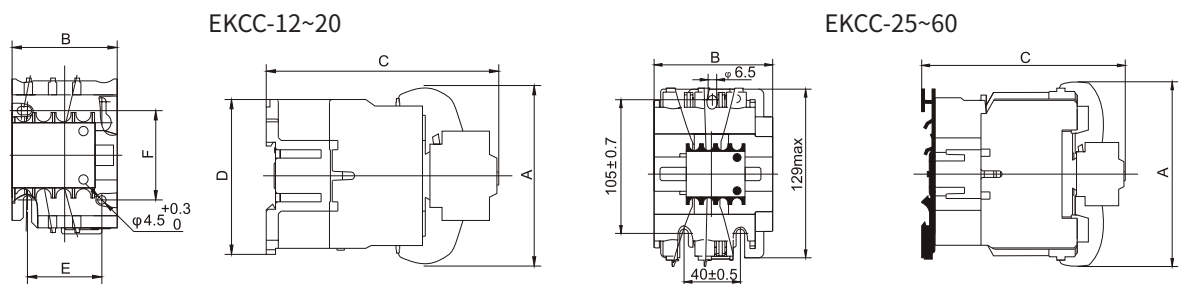
Type Designation



Technical Data

Technical Specification	IEC/EN60947-4-1							
	Model No.	EKCC-12	EKCC-16	EKCC-20	EKCC-25	EKCC-33	EKCC-40	EKCC-60
Contactor size		EKC1-18	EKC1-25	EKC1-32	EKC1-40	EKC1-50	EKC1-65	EKC1-95
Rated Conventional Heating Current	Ith(A)	32	40	50	60	80	80	125
Rated Work Current	415V/le (A)	18	25	32	40	50	65	95
Capacitor Controlled	220V/240V(Kvar)	6	8	10	12.5	16.5	20	30
	400V/440V(Kvar)	12	16	20	25	33	40	60
Rated Insulation Voltage	Ui(V)	690	690	690	690	690	690	690
Rated Operation Voltage	Ue(V)	400	400	400	400	400	400	400
Electrical life(x10 ³)	Times	120	120	120	100	100	100	100
	Times	3000	3000	3000	3000	3000	3000	3000
Restrained Surge Capacity	x le	15						
Auxiliary Contact	Ith=10A	1NO+1NC			1NO+2NC			
	Control Capacity	AC-15 360VA; DC-13 33W						
COIL PARAMETERS								
Coil Power(VA)	Start-up	76	110	110	230	230	230	230
	Holding	10	11	11	32	32	32	32
Rated Control Power	Us(V)	24,36,48,110,220,380						
Pull time	Ms	12~22	15~24	15~24	20~26	20~26	20~26	20~35
Release time	Ms	4~12	5~19	5~19	8~12	8~12	8~12	6~20
Operation Range	Pick-up	(85%-110%)Us						
	Drop-out	(20%-75%)Us						

Overall and Installation Dimension(mm)



Model	A Max	B Max	C Max	D Max	E	F	Note
EKCC-12	80	47	124	76	34/35	50/60	be fixed with 35mm din rail
EKCC-16	90	57	132	86	40	48	
EKCC-20	90	57	132	86	40	48	
EKCC-25	132	77	150	-	-	-	Not only fixed by screws but also could be fixed with 35mm and 75mm DIN rail
EKCC-33	132	77	150	-	-	-	
EKCC-40	132	77	150	-	-	-	
EKCC-60	135	87	162	-	-	-	

Wiring and installation

The connection terminals are protected through insulation cover, which is reliable and secure for installation and operation; For EKCC-12~20, screws are available for installation, as well as the DIN rail; For EKCC-25~60, 35mm or 75mm standard rail are available for installation.